

Akron Electric (USA)

FCG (India)

# HIRLEKAR PRECISION

## EX 200DGR

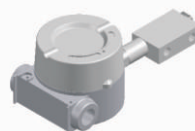
**ΔP Range:** 0 to 0.25 upto 7 bar  
0 to 5 upto 100 psi

### COMBINATIONS

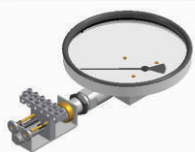
**Gauge + switch**  
(with a terminal strip inside)



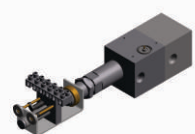
**Switch**



**Gauge + switch**  
(Without Ex-proof enclosure)

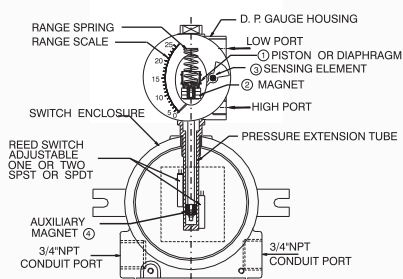


**Switch\***  
(Without Ex-proof enclosure)



\*Locally available explosion proof enclosures can be used

### ASSEMBLY



### Specifications

Accuracy	±2% of the FSD (Ascending)
Migration	No migration. Zero leakage from high to low port
Range	0-0.25 to 0-7 bar or equivalent range in other units
First marking on the scale	15% of the FSD
Sensing element	Diaphragm
Wetted parts	Diaphragm, Body material, SS 302 spring & ceramic magnet
Case material & dial size	Stainless steel (SS 304): 2.5", 3.5", 4", 4.5", 6.0" Engineering polymer: 2.5", 4.5", 6.0"
Mounting	Surface, 2" pipe mounting
Maximum working pressure	200 bar / 3000 psi
Maximum process temperature	0 to 80°C (32 to 175°F)
Body material	Aluminum, Brass, SS 316, Monel
Diaphragm	Buna-N, Viton, EPDM
Window	Float glass(Std.), toughened glass, acrylic & safety glass.
Connection	1/4" NPT(F) (Std.), 1/4" BSP(F) through adaptor
Porting	Bottom (right side), back
Over range protection	Up to the max. working pressure from high side only <i>Never pressurize only LP side</i>
Protection for gauge & switch	IP 65 / NEMA-4

### Options

Liquid filling (glycerine/ silicone)  
Red follower pointer  
Customer logo  
Dual scale  
Color band  
Filter mesh in (+) connection  
Descending calibration

### Switches (Adjustable in 30-100% of FSD)

1 or 2 SPSTs with a terminal strip  
1 or 2 SPDTs with a terminal strip

Available in engineering polymer (EP) Case



6.0" 4.5" 2.5"

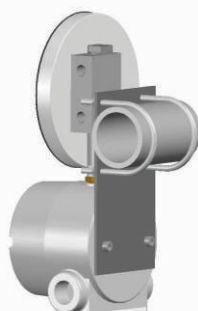
- Removable glass
- Strong and durable
- Panel mounting possible
- Condensation can be cleaned
- Light weight

### Enclosure Approvals

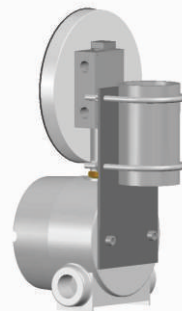
Ex-proof enclosure make	Certification	Electrical connection	Mounting
<b>Akron Electric USA</b>	UL, CSA, FM, CENELEC, KEMA / ATEX approved. Compliance to EN 50 014:1971+A1...A5 and EN 50 018: 1977+A1...A3. Ref: UL:E139669 / CSA:LR86146-5 KEMA: 03ATEX2460 U 0539 Ex II 2G EEx d II C	2 X 3/4" NPTF conduit ports on either side as shown	Two slots provided suitable for M6 / 1/4" UNC screw.
<b>FCG India</b>	Compliance to EN 50014: 1977 + A1:1999+A2:1999 and EN 50281-1-1:1998 + A1:2002 Ref: DNV-2006-OSL-ATEX-0075 / Ex II 2 GD EEx d IIC T6	3 X 3/4" ET conduit ports as shown.	Two elliptical holes provided suitable for M6 / 1/4"UNC screw.

### MOUNTING BRACKETS

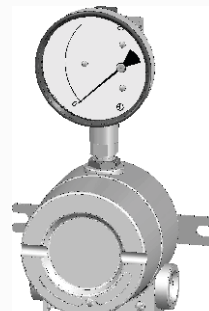
#### Horizontal pipe mounting



#### Vertical pipe mounting



#### Surface mounting



## SELECT MODEL

<b>1 Series</b>	<b>EX 200DGR</b>			
<b>2 Type</b>	GS Gauge + Switch	S	Switch	
<b>3 Body material</b>	A Aluminum	B	Brass	
	S SS-316	M	Monel	
<b>4 Dial size</b>	2.5 2.5" (63 mm)	4.5	4.5" (115 mm)	
	3.5 3.5" (80 mm)	6.0	6.0" (150 mm)	
	4.0 4.0" (100 mm)			
<b>5 Connection</b>	4N 1/4" NPT (F) (Std.)	4B	1/4" BSP (F) (MOQ)	
	ZZ Special connection sizes using adaptor			
<b>6 Porting</b>	3 Bottom (Right side)	2	Back	
<b>7 Case</b>	S4 SS 304 (Std.)	S6	SS 316	
	F4 SS 304 flange			
	EP Engineering polymer (available in 2.5", 4.5", 6" only)			
<b>8 Window</b>	F Glass (Std.)	A	Acrylic	
	T Toughened glass	L	Safety glass	
<b>9 Seals/Diaphragm</b>	B Buna-N (Std.)	E	EPDM	
	V Viton			
<b>10 Switch</b>	Select option & Specifications			

### Advantages :

Instrument automatically resets after line surges and cold start.  
This eliminates balancing of differential pressure instrument after such events.

### Notes

- Both enclosures have provision for surface mounting.
- For SS 316 case, please contact factory (MOQ applies).
- Liquid filling + Follower pointer available.
- Switch adjustment range between 30-100% of full scale deflection (FSD). For specific details, please contact factory.
- Minimum Order Quantity (MOQ) applies for 6.0" (150mm) dial.
- For electrical connection details, please refer to the datasheet.
- Mounting bracket: Aluminum (Standard) ; SS (Optional)

0	None
2	One SPST, with a terminal strip
4	Two SPSTs, with a terminal strip

+

### SPST Specifications (AC/DC max)

1 Standard	2	3	4
10 VA	40 VA	100 VA	60 VA
100 V	230 V	300 V	240 V
0.5 Amp	1 Amp	1 Amp	3 Amp
Adjustable	Adjustable	Adjustable	Adjustable

6	One SPDT, with a terminal strip
8	Two SPDTs, with a terminal strip

+

### SPDT Specifications (AC/DC max)

1 Standard	2	3
3 VA	5 VA	5 VA
30 V	125 V	175 V
0.3 Amp	0.25 Amp	0.25 Amp
Adjustable	Adjustable	Adjustable

Example: Switch selection 21 is 1 SPST with terminal strip  
with switch specifications 10VA, 100V, 0.5Amp

## 11 Range

### Standard ranges : (Other ranges & units on request)

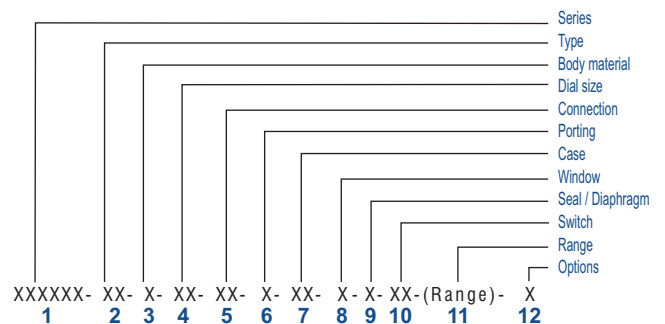
Kg/cm <sup>2</sup>	0.25	-	0.5	0.75	1	-	2	2.5	-	4	7
bar	0.25	-	0.5	0.75	1	-	2	2.5	-	4	7
mbar	250	-	-	750	-	-	-	-	-	-	-
psi	-	5	7	-	15	25	30	-	40	60	100
kPa	25	-	50	75	100	-	200	250	-	400	700

## 12 Options

0	None
A	Glycerine *
B	Red follower pointer on acrylic window *
C	Customer Logo
D	Dual scale
E	Colour band
F	Filter mesh in (+) connection
H	Descending calibration (long delivery time)
N	NACE
S	Silicone oil*
I	Oxygen service (Contact factory)
M1	2" horizontal pipe mounting bracket
M3	2" vertical pipe mounting bracket

\* Affects accuracy

## Ordering code sequence



Contact factory for special execution.