



700 DGC

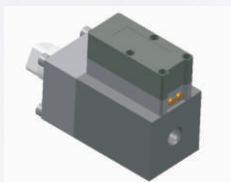
ΔP Range: 0 to 750 upto 40000 mmH₂O
0 to 1 upto 60 psi

COMBINATIONS

Gauge

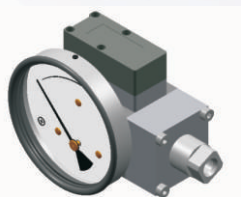


Switch



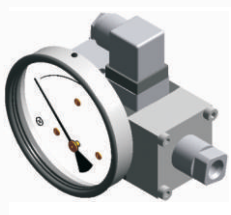
Gauge + switch

(with a terminal strip inside)



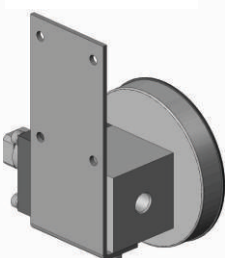
Gauge + switch

(with a DIN plug on top)



MOUNTING BRACKETS

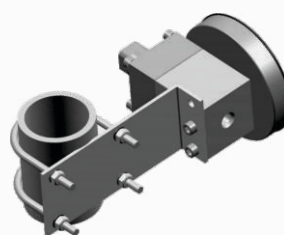
Surface mounting



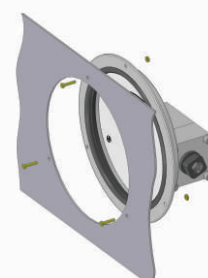
Horizontal pipe mounting



Vertical pipe mounting



Panel / Flange mounting



Specifications

Accuracy	±2% of the FSD (Ascending)
Migration	No migration ; Zero leakage from high to low port
Range	0-0.075 to 0-4 bar or equivalent ranges in other units
First marking on the scale	15% of the FSD
Sensing element	Diaphragm
Wetted parts	Diaphragm, body material, SS 302 spring & ceramic magnet
Case material & dial size	Stainless steel (SS 304): 2.5", 3.5", 4", 4.5", 6" Engineering polymer: 2.5", 4.5", 6"
Mounting	Direct, front flange, 2" pipe & surface mounting
Maximum working pressure	100 bar / 1500 psi
Maximum process temperature	0 to 80°C (32 to 175°F)
Body material	Aluminum, Brass, SS 316 & Monel
Diaphragm	Buna-N, Viton, EPDM
Window	Float glass (Std.), toughened glass, acrylic & safety glass
Connection	1/4" NPT(F) (Std.), 1/4" BSP(F) and others through adaptor
Porting	In-line, rear, bottom, bottom & vent, in-line & vent, in-line & bottom.
Over range protection	Up to the max. working pressure from high side
Protection for gauge & switch	IP 65 / NEMA-4

Options

Liquid filling (glycerine/ silicone)
Red follower pointer
Customer logo
Dual scale
Colour band
Filter mesh in (+) connection
Descending calibration

Switches (Adjustable in 30-100% of FSD)

1 SPST with a DIN plug
1 or 2 SPSTs with a terminal strip
1 SPST with a built in relay
1 or 2 SPDTs with a terminal strip
1 or 2 SPDTs with a DIN plug

Available in engineering polymer (EP) Case



6.0"



4.5"



2.5"

- Removable glass
- Strong and durable
- Panel mounting possible
- Condensation can be cleaned
- Light weight

SELECT MODEL

1 Series	700 DGC			
2 Type	G	Gauge	S	Switch
	GS	Gauge + Switch		
3 Body material	A	Aluminum	S	SS-316
	B	Brass	M	Monel
4 Dial size	2.5	2.5" (63 mm)	4.5	4.5" (115 mm)
	3.5	3.5" (80 mm)	6.0	6.0" (150 mm)
	4.0	4.0" (100 mm)		
5 Connection	4N	1/4" NPT (F) (Std.)	4B	1/4" BSP (F)
	ZZ	Special connection sizes using adaptor		
6 Porting	1	In-line (Std.)	5	In-line & vent
	2	Rear / Back	6	In-line & bottom
	3	Bottom	7	Bottom vent & in-line
	4	Bottom & vent		
7 Case	S4	SS 304 (Std.)	S6	SS 316
	F4	SS 304 flange		
	EP	Engineering polymer (available in 2.5", 4.5", 6.0" only)		
8 Window	F	Glass (Std.)	A	Acrylic
	T	Toughened glass	L	Safety glass
9 Seals/Diaphragm	B	Buna-N (Std.)	E	EPDM
	V	Viton		
10 Switch	Select option & specifications			

Advantages :

Instrument automatically resets after line surges and cold start.
This eliminates balancing of differential pressure instrument after such events.

Notes

- Top vent not available with switch option.
- For SS 316 case, please contact factory (MOQ applies).
- Liquid filling + Follower pointer available.
- Switch adjustment range between 30-100% of full scale deflection (FSD). For specific details, please contact factory.
- **We can supply gauge with kgs of liquid / Liters of liquid (tank drawing required).**
- Mounting bracket: Aluminum (Standard) ; SS (Optional)

0	None
1	One SPST, with a DIN plug †
2	One SPST, with a terminal strip
2A	One SPST, with built in relay
3	Two SPSTs, with a DIN plug †
4	Two SPSTs, with a terminal strip

+

SPST Specifications (AC/DC max)

1 Standard	2	3	4
10 VA	40 VA	100 VA	60 VA
100 V	230 V	300 V	240 V
0.5 Amp	1 Amp	1 Amp	3 Amp
Adjustable	Adjustable	Adjustable	Adjustable

5	One SPDT, with a DIN plug †
6	One SPDT, with a terminal strip
7	Two SPDTs, with two DIN plugs
8	Two SPDTs, with a terminal strip

+

SPDT Specifications (AC/DC max)

1 Standard	2	3	4
3 VA	5 VA	5 VA	60 VA
30 V	125 V	175 V	400 V
0.3 Amp	0.25 Amp	0.25 Amp	1 Amp
Adjustable	Adjustable	Adjustable	Factory Set

Example: Switch selection 21 is 1 SPST with terminal strip
with switch specifications 10VA, 100V, 0.5Amp

† DIN plug mounted on the top.

11 Range

Standard ranges : (Other ranges & units on request)

mmH ₂ O	750	1200	1500	1800	2000	2500	5000	7500	10000	12000	16000	20000
inch H ₂ O	30	50	60	70	80	100	200	300	400	500	600	800

12 Options

0	None
A	Glycerine*
B	Red follower pointer on acrylic window *
C	Customer Logo
D	Dual scale
E	Colour band
F	Filter mesh in (+) connection
G	Reverse Port**
H	Descending calibration (long delivery time)
N	NACE
S	Silicone oil*
I	Oxygen service (Contact factory)
P	DIN plug at back on plastic switch cover
M1	2" horizontal pipe mounting bracket
M2	Surface mounting bracket
M3	2" vertical pipe mounting bracket
Q	Metallic switch cover with tamper proof plastic plugs ***

* Affects accuracy

** Pointer moves from right to left

*** Minimum order quantity applies

Ordering code sequence

