



## 600 DGC

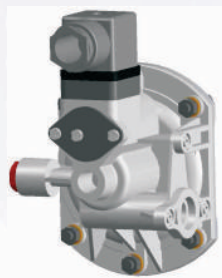
**ΔP Range:** 0 to 25 upto 1250 mm H<sub>2</sub>O  
0 to 1 upto 50 inch H<sub>2</sub>O

### COMBINATIONS

#### Gauge



#### Switch



#### Gauge+switch (With a DIN plug on top)



### Specifications

Accuracy	±3% of the FSD (Ascending)
Migration	No migration ; Zero leakage from high to low port
Range	0-25 to 0-1250 mm of water
First marking on the scale	15% of the FSD
Sensing element	Diaphragm
Wetted parts	Diaphragm, body material, SS 302 spring & ceramic magnet
Case material	Stainless steel (SS 304)
Dial size in mm (inch)	112mm. (4.4") (Other dial sizes on request)
Mounting	Flush (Std.), 2" pipe & surface mounting on request
Maximum working pressure	2.4 bar / 35psi
Maximum process temperature	0 to 60°C (32 to 140°F)
Body material	Engineering polymer
Diaphragm	Buna-N, Viton, EPDM
Window	Float glass (Std.), toughened glass & acrylic on request.
Connection	1/8" NPT(F)
Porting	In-line, back, In-line & back
Over range protection	Up to the max. working pressure from high side
Protection for gauge & switch	IP 65 / NEMA-4

### Options

Liquid filling (glycerine/silicone)
Customer logo
Dual scale
Color band
Filter mesh in (+) connection
Descending calibration

### Switches (Adjustable in 20-80% of FSD)

1 or 2 SPSTs with a DIN plug
1 SPDT with a DIN plug

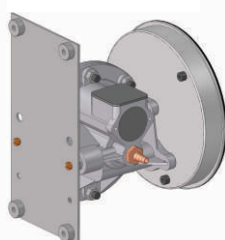
*Switch can be added anytime on the field.*

### Accessories supplied with instrument



### MOUNTING BRACKETS

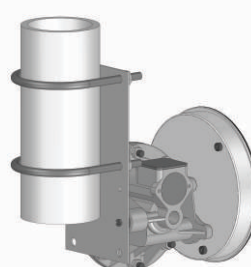
#### Surface mounting



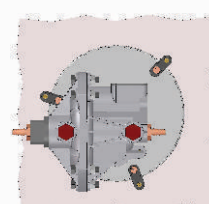
#### Horizontal pipe mounting



#### Vertical pipe mounting



#### Panel / Flange mounting



## SELECT MODEL

<b>1 Series</b>	<b>600 DGC</b>	
<b>2 Type</b>	G Gauge GS Gauge + Switch	S Switch
<b>3 Body material</b>	P Engineering Polymer	
<b>4 Dial size</b>	3.5 3.5" (80 mm) 4.0 4.0" (100 mm) 4.4 4.4" (112 mm) (Std.)	4.5 4.5" (115 mm) 6.0 6.0" (150 mm)
<b>5 Connection</b>	8N 1/8" NPT (F)	
<b>6 Porting</b>	1 In-line 2 Back	
<b>7 Case</b>	S4 SS 304 (Std.) F4 SS 304 flange EP Engineering polymer (available in 4.5", 6.0" only)	
<b>8 Window</b>	F Glass (Std.) T Toughened glass	A Acrylic L Safety glass
<b>9 Seals/Diaphragm</b>	B Buna-N (Std.) V Viton	E EPDM
<b>10 Switch</b>	Select option & Specifications	

### Advantages :

Instrument automatically resets after line surges and cold start.  
This eliminates balancing of differential pressure instrument after such events.

### Notes

- Longer lead time for non-standard dial sizes and flange case
- For SS 316 case, please contact factory (MOQ applies).
- Liquid filling + Follower pointer available.
- Switch adjustment range between 20-80% of full scale deflection (FSD).  
Switches mounted at the back. For specific details, please contact factory.
- Mounting bracket: Aluminum (Standard) ; SS (Optional)

0	None
1	One SPST, with a DIN plug
3	Two SPSTs, with a DIN plug

+

### SPST Specifications (AC/DC max)

1 Standard	2	3	4
10 VA	40 VA	100 VA	60 VA
100 V	230 V	300 V	240 V
0.5 Amp	1 Amp	1 Amp	3 Amp
Adjustable	Adjustable	Adjustable	Adjustable

5	One SPDT, with a DIN plug
---	---------------------------

Example: Switch selection 31 is 2 SPSTs with DIN plug with switch specifications 10VA, 100V, 0.5Amp

+

### SPDT Specifications (AC/DC max)

1 Standard	2	3
3 VA	5 VA	5 VA
30 V	125 V	175 V
0.3 Amp	0.25 Amp	0.25 Amp
Adjustable	Adjustable	Adjustable

## 11 Range

### Standard ranges : (Other ranges & units on request)

mmH2O	25	50	75	100	125	150	200	250	375	500	750	1000	1250
InH2O	1	2	3	4	5	6	8	10	15	-	-	-	-
mbar	2.5	5.0	7.5	10	12.5	15	20	25	37.5	50	75	100	125
Pa	250	500	750	-	-	-	-	-	-	-	-	-	-

## 12 Options

0	None
A	Glycerine*
B	Red follower pointer on acrylic window*
C	Customer Logo
D	Dual scale
E	Color band
F	Filter mesh in (+) connection
H	Descending calibration (long delivery time)
S	Silicone oil*
M1	2" horizontal pipe mounting bracket
M2	Surface mounting bracket
M3	2" vertical pipe mounting bracket

\* Affects accuracy

## Ordering code sequence

